

Motivation and Student Perceptions of Success at English Medium Universities

(a mostly survey-based study)

Yasemin Kırkgöz, Ph.D.

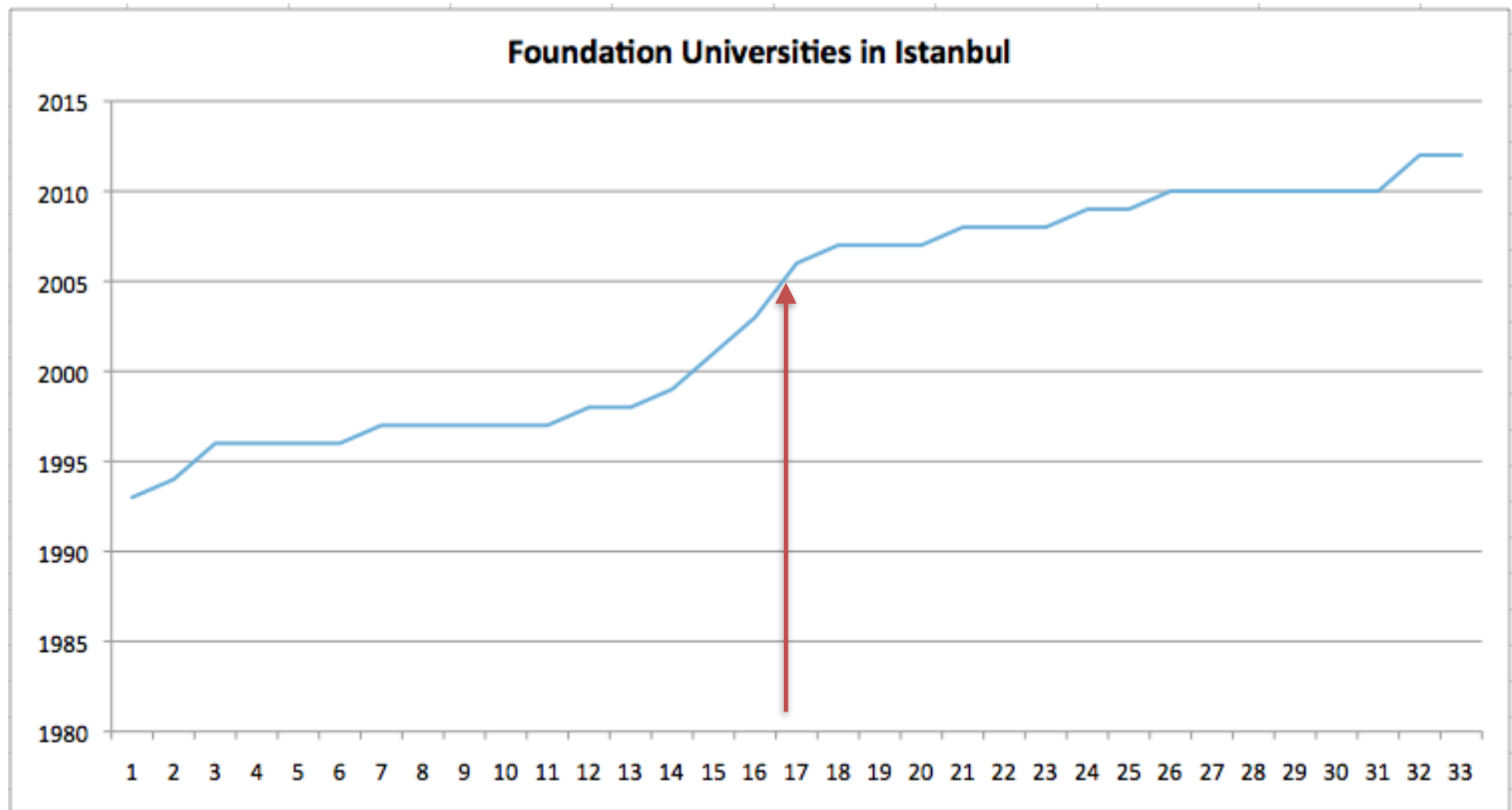
Çukurova University - Adana, Turkey

Donald Staub, Ed.D.

Işık University - Istanbul, Turkey

Motivation

- *Integrative* motivation refers to learner wishes to identify with the culture of the L2 group.
- *Instrumental* motivation refers to learner wishes to acquire the language for pragmatic, or functional needs; e.g., for job or study-related purposes.

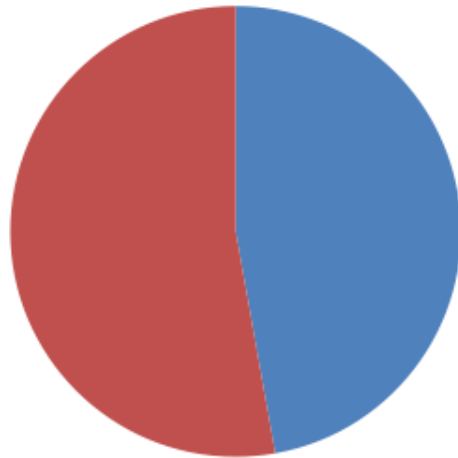


| 80 universities in Turkey

Research Questions

1. What motivates students to choose schools that offer EMI?
2. What is the relationship between student motivation toward language learning and the possibility of academic success?

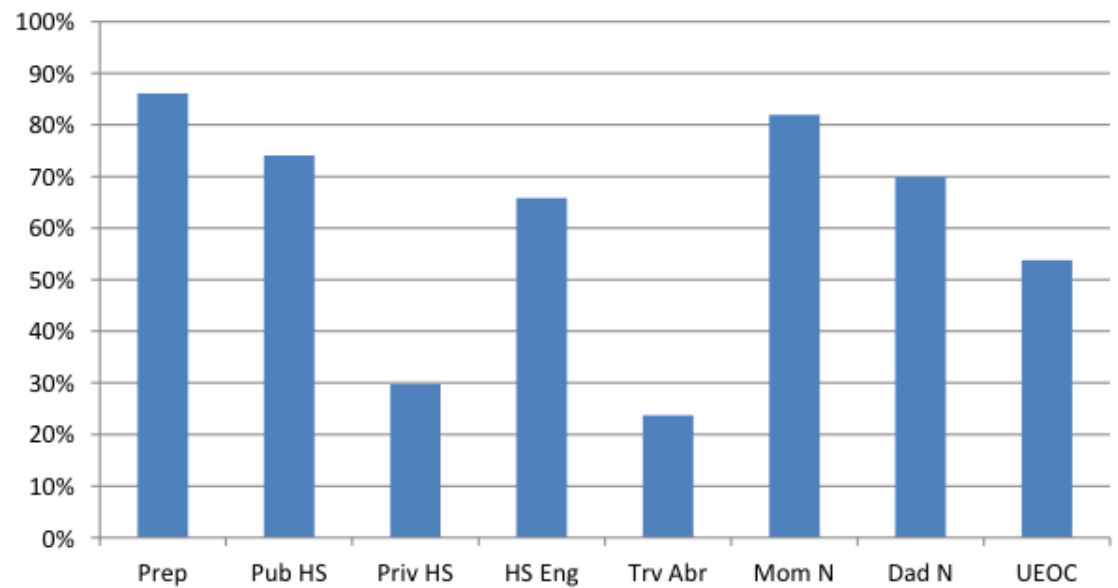
N=265



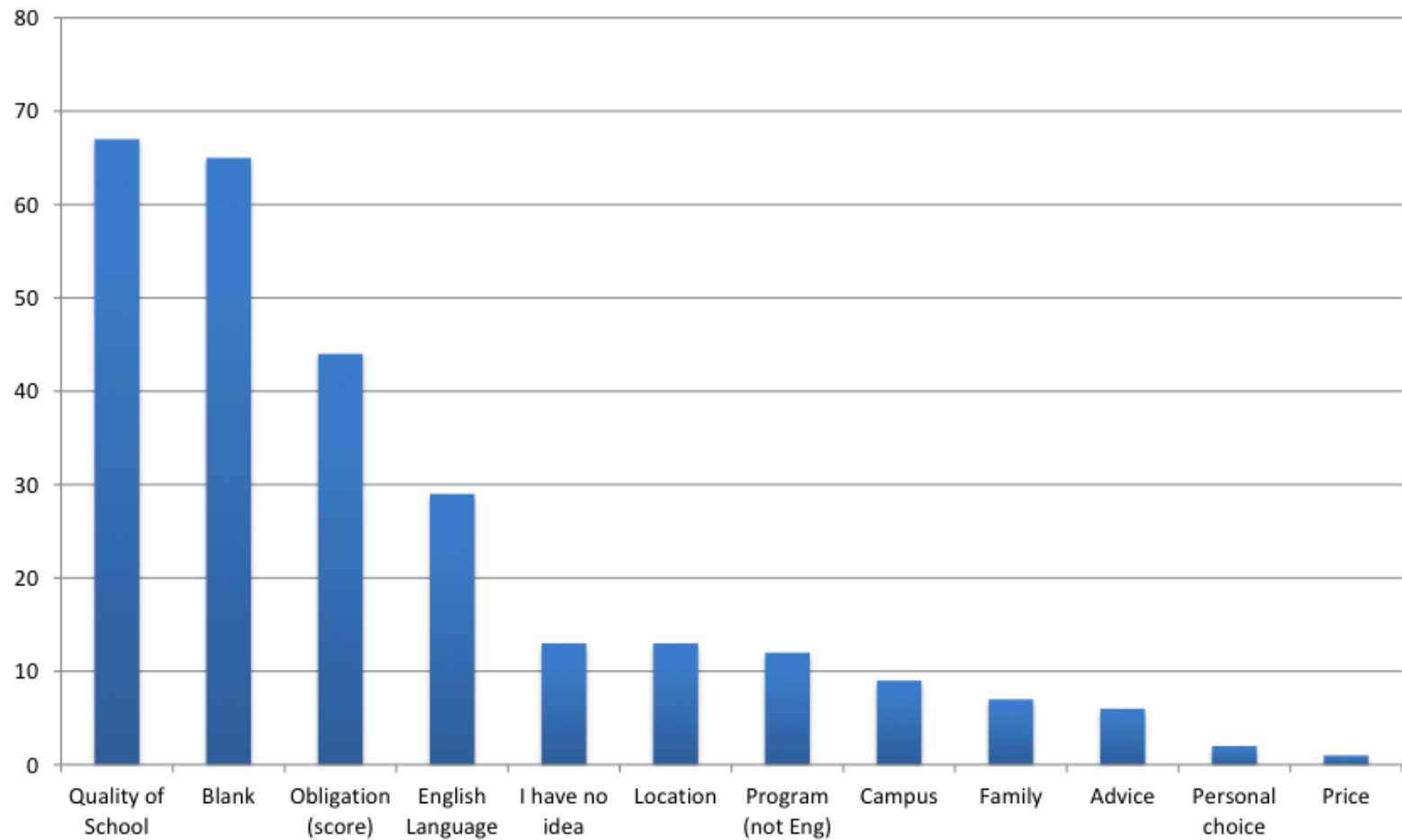
M
F

Respondents

Respondents



Reason for School Choice



Motivation

- *Integrative* motivation refers to learner wishes to identify with the culture of the L2 group.
- *Instrumental* motivation refers to learner wishes to acquire the language for pragmatic, or functional needs, for example, for job or study related purposes.

Top-5 reasons for learning English
Instrumental v. **Integrative**

Kırkgöz, 2005

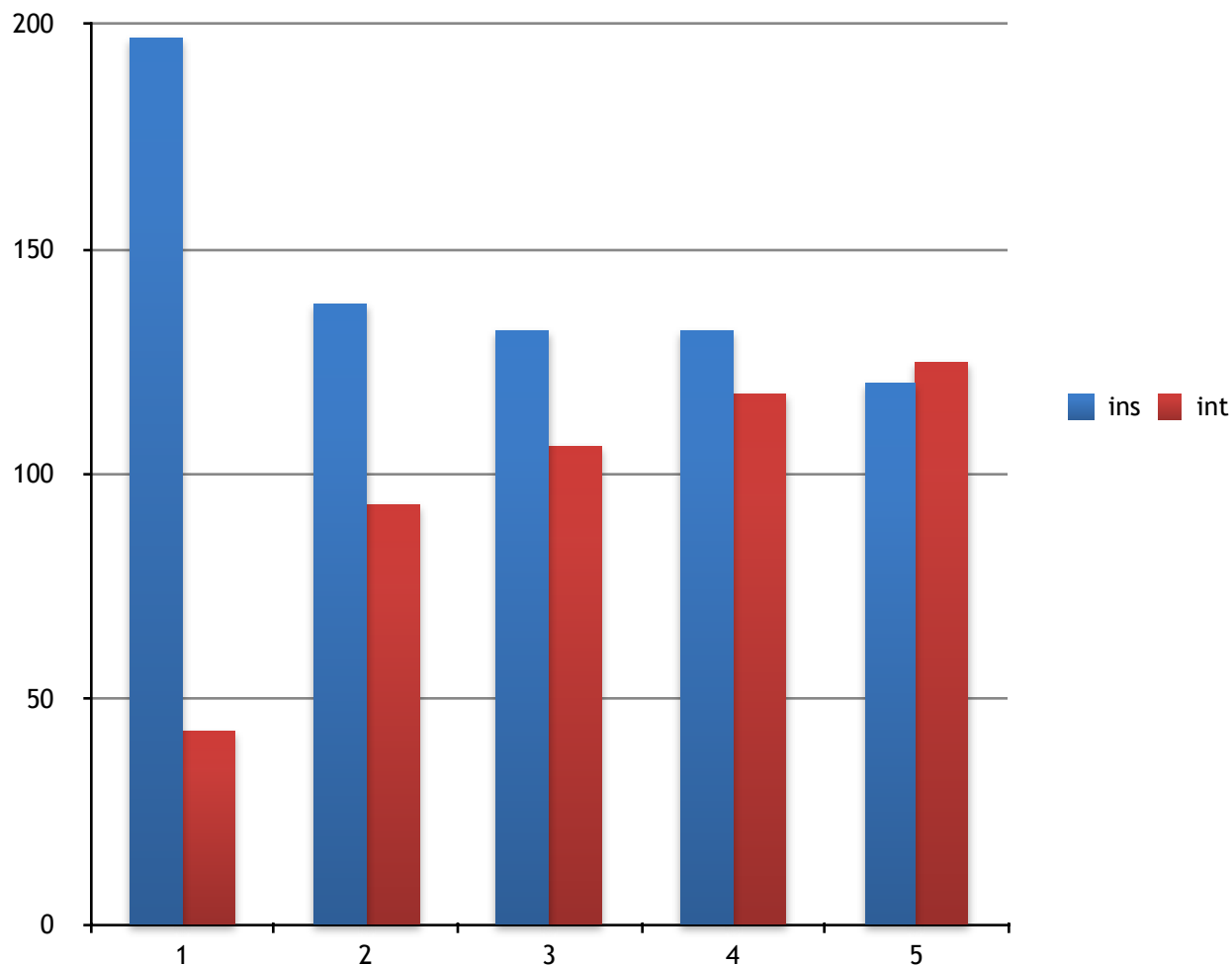
1. Get a well paid job (INS)
2. Become broadly educated (INS)
3. Discuss subjects in my field (INS)
4. Get on well with English speaking people (INT)
5. Be involved in research in my field (INS)

(4 of 5 top choices are instrumental)

Top-5 reasons for learning English

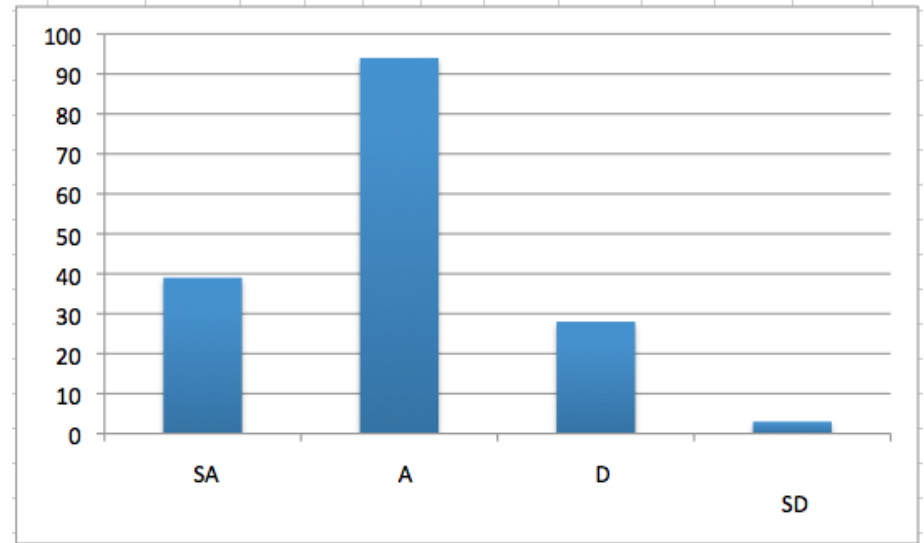
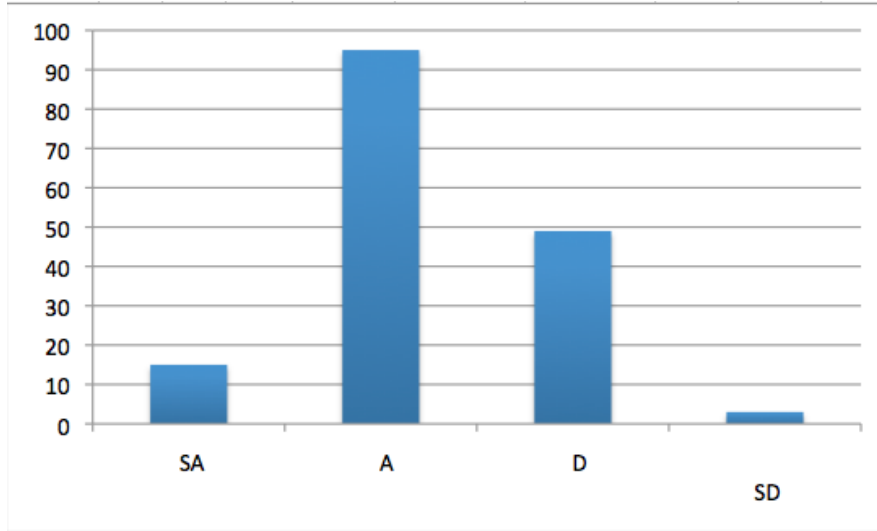
Instrumental v. Integrative

ROI



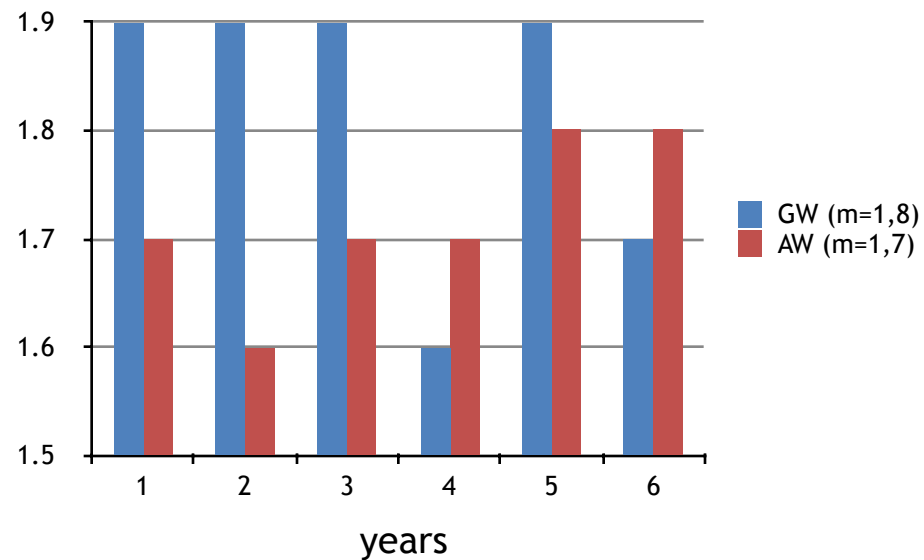
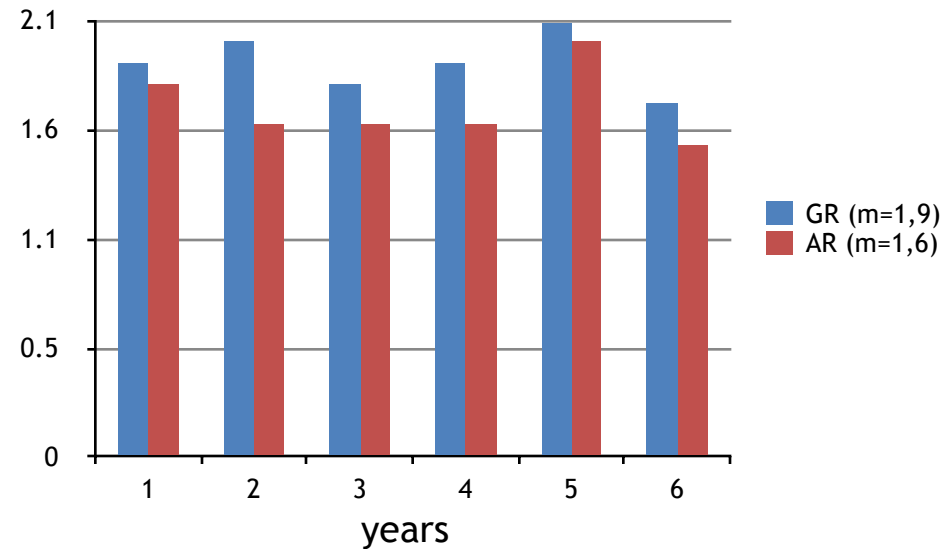
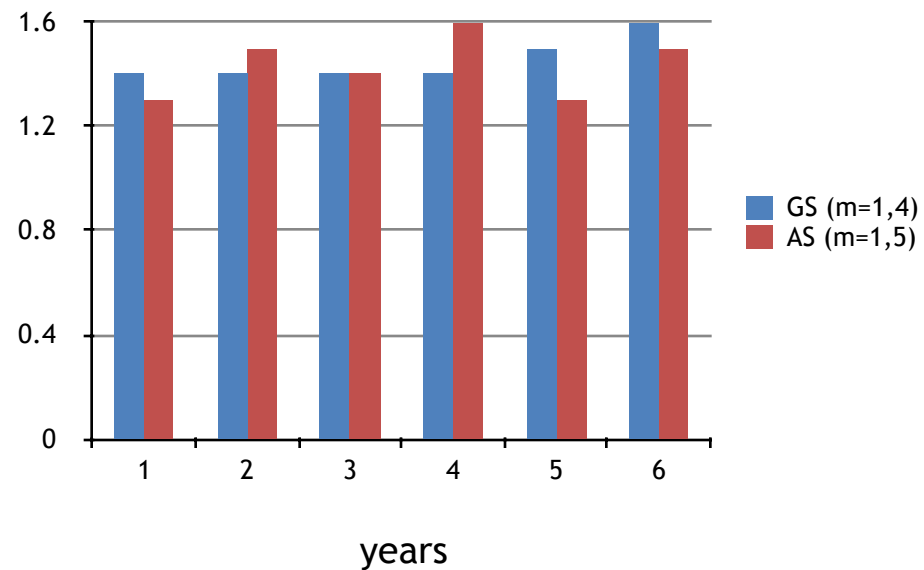
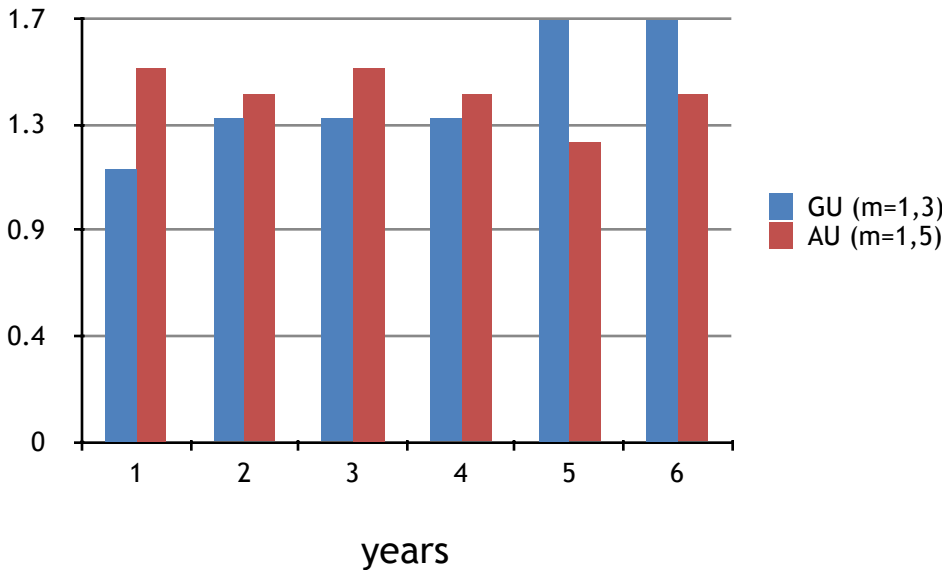
(4 of 5 top choices are instrumental)

I am confident in my ability to write a research paper for one of my classes.

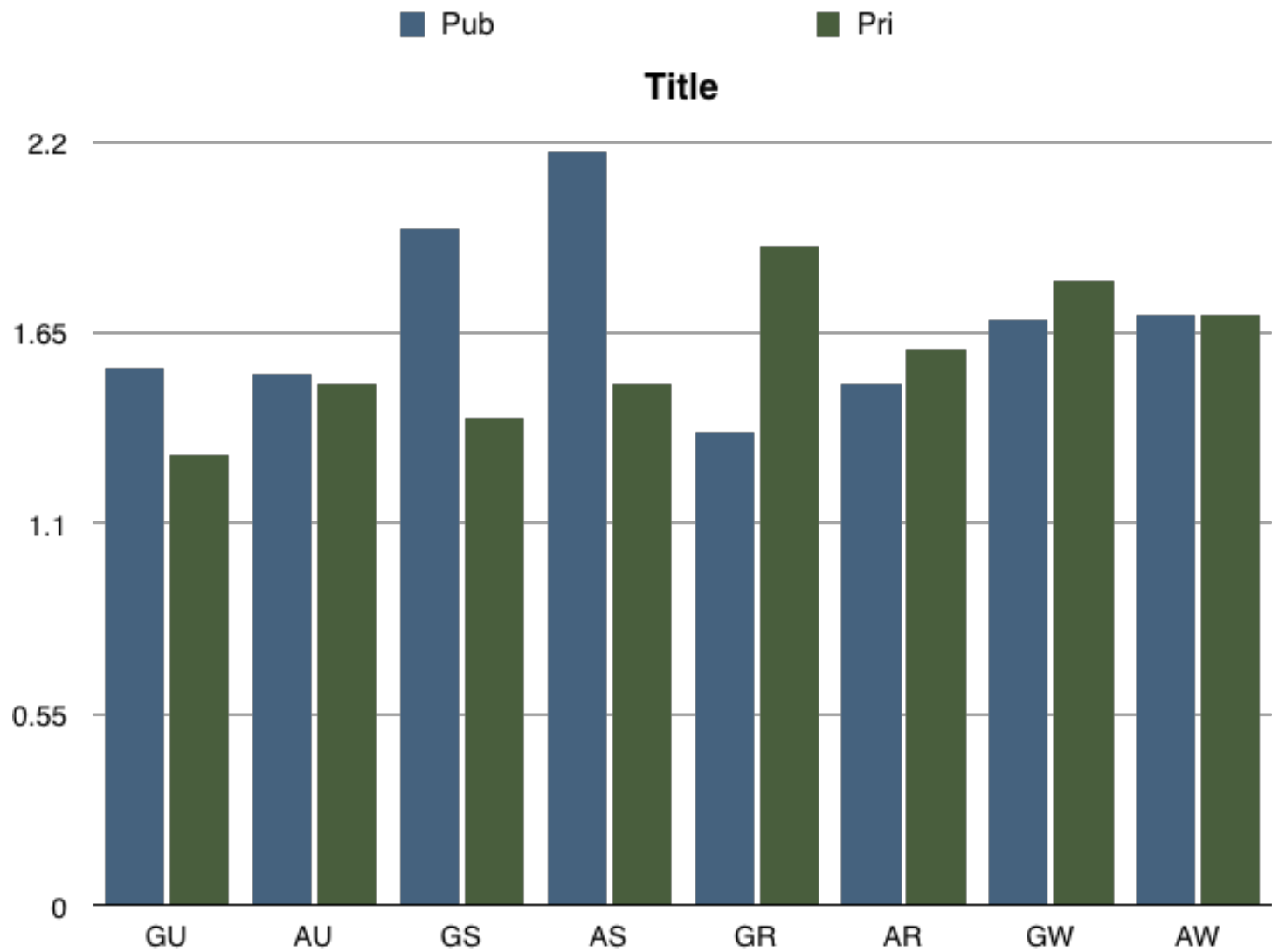


I can easily follow a classroom lecture in English.

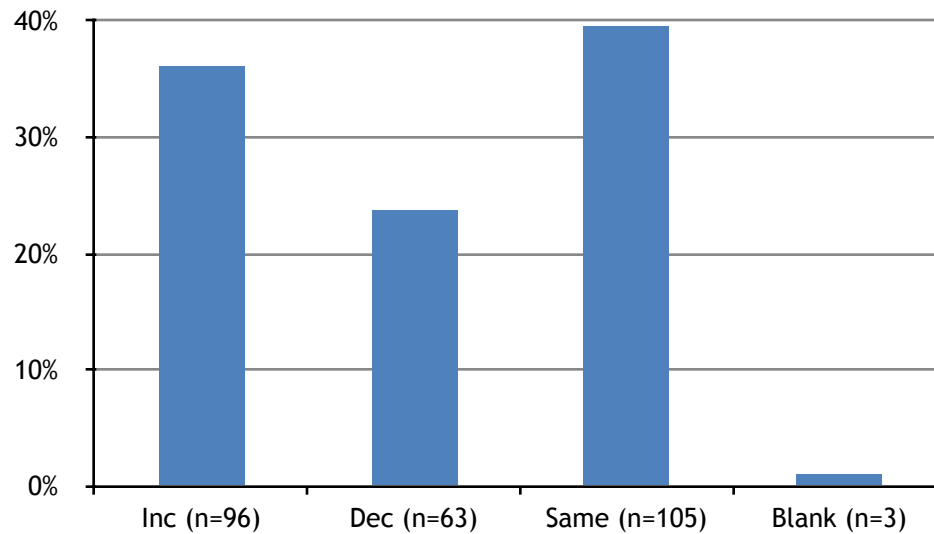
Student Self-Perceptions Toward General & Academic Skills - over 6-year Period



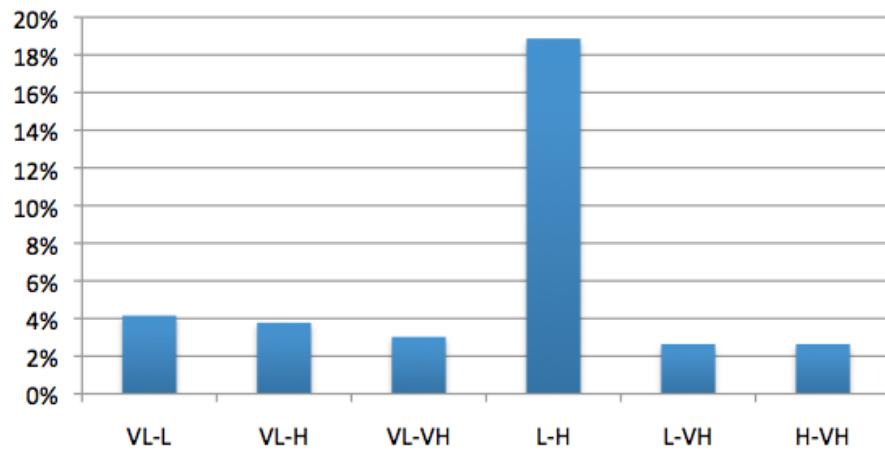
Student Self-Perceptions Toward General & Academic Skills



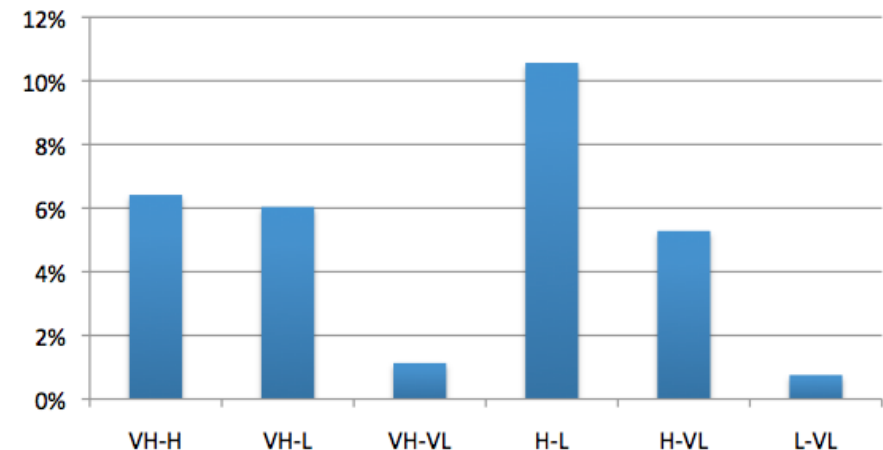
Shifts in degree of motivation over time



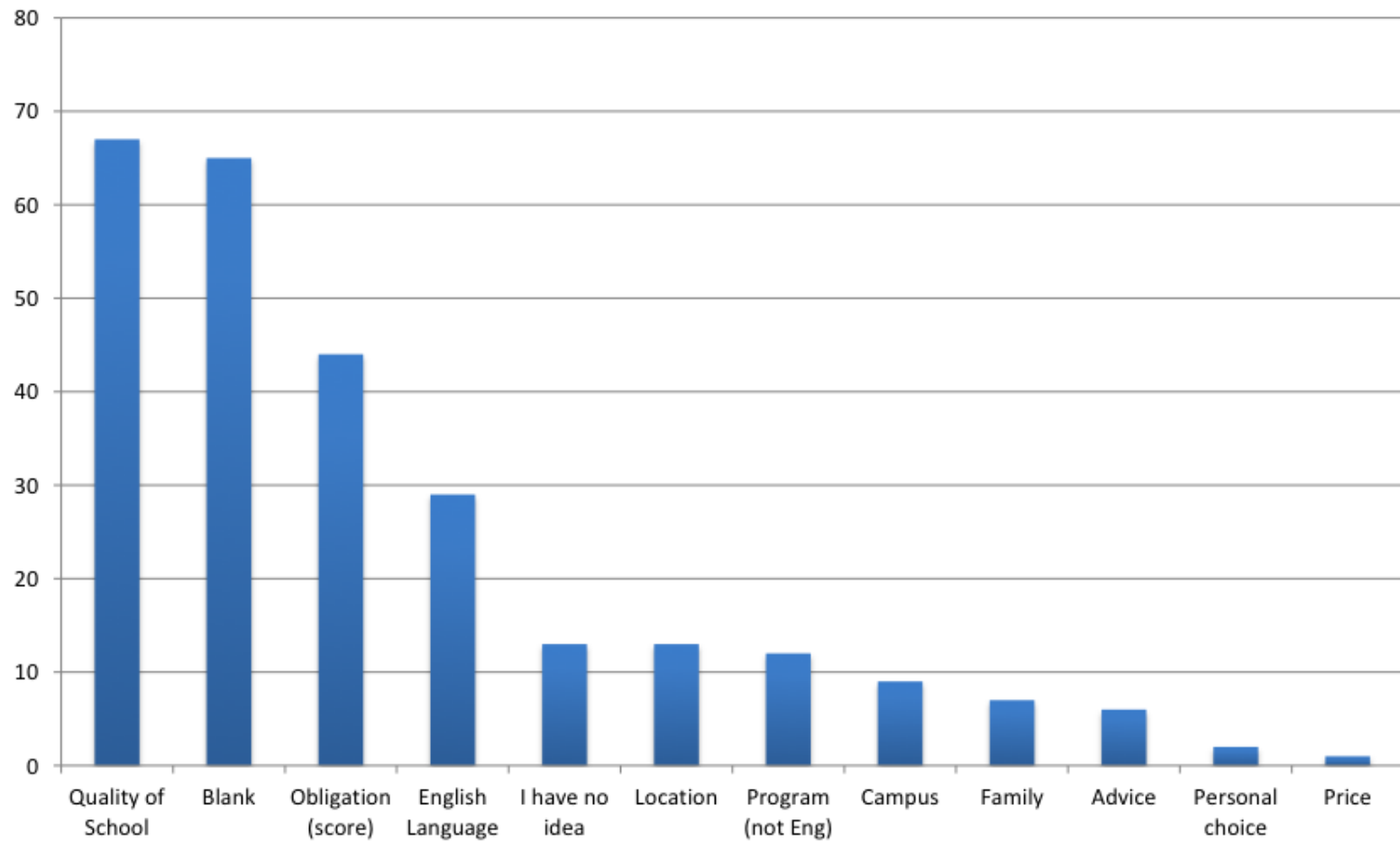
Increase



Decrease

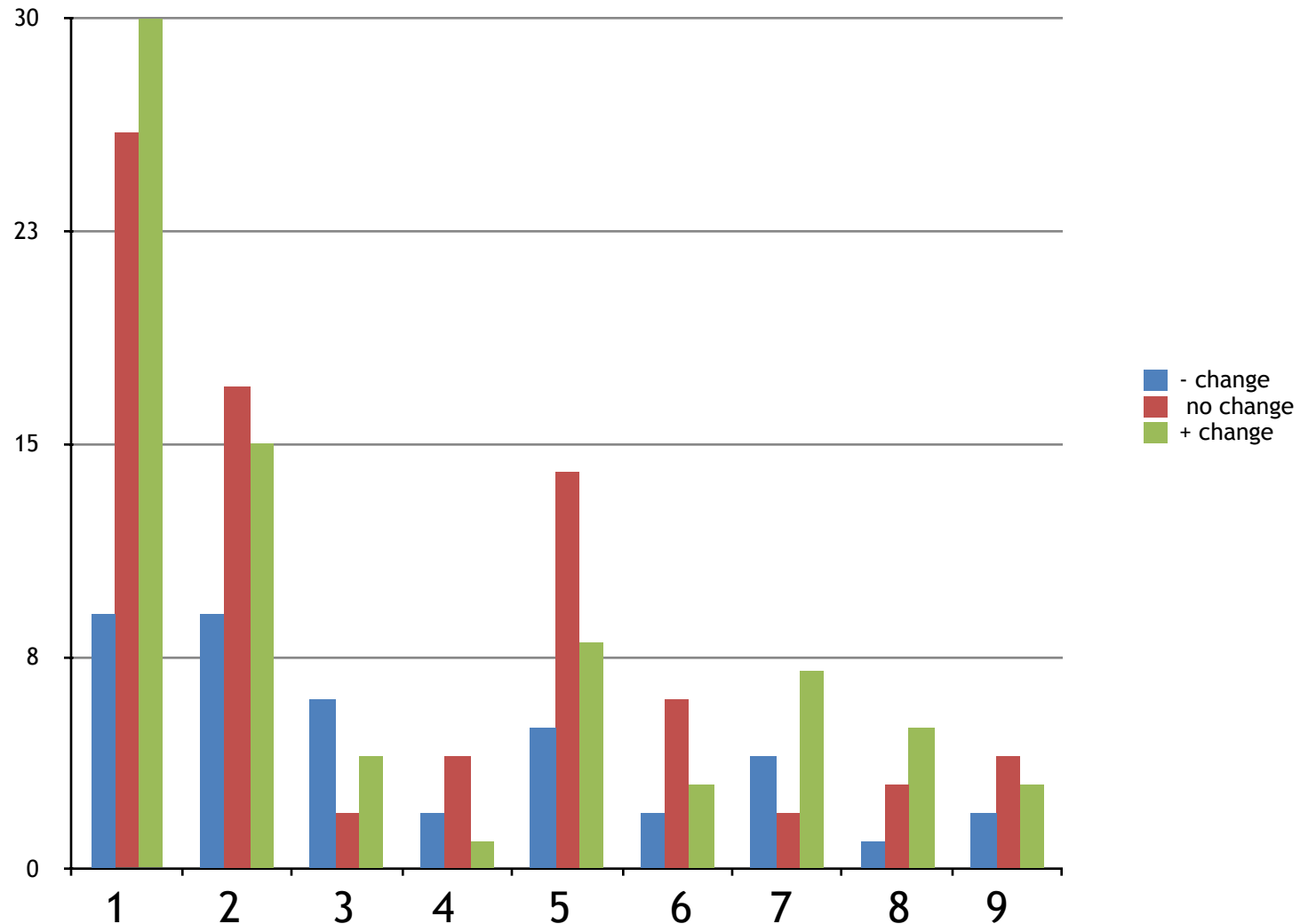


Reason for School Choice



Reason for school choice compared with Change in degree of motivation over time

1	Quality of School
2	Obligation (score)
3	I have no idea
4	Family
5	English Language
6	Location
7	Program
8	Advice
9	Campus



Discussion

- Early assessment to determine motivations
- More content-based, earlier(?)
- Monitor for shifts in motivation (retention?)
- Follow-on Research - why decreases or stagnation?

Would you ask?

Let me know and I will send you our survey.

staubdonald2@yahoo.com